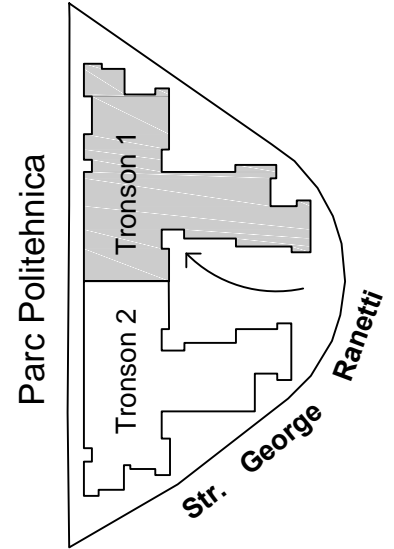
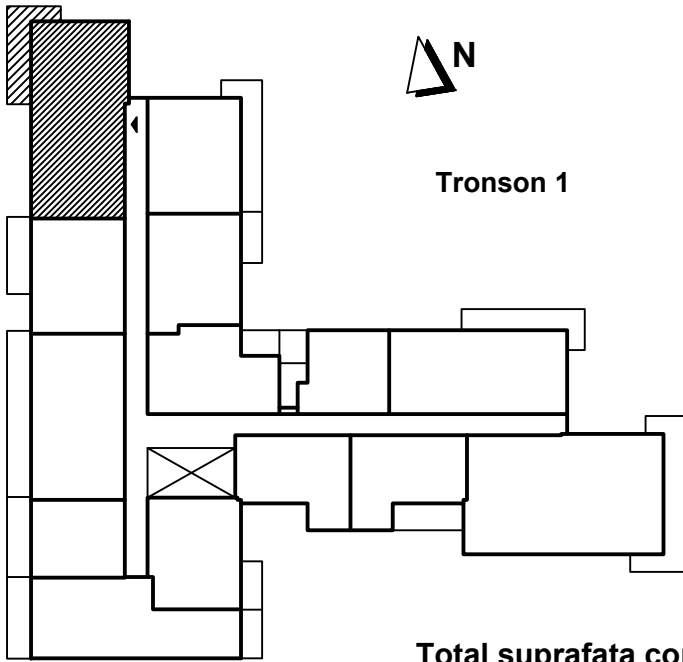


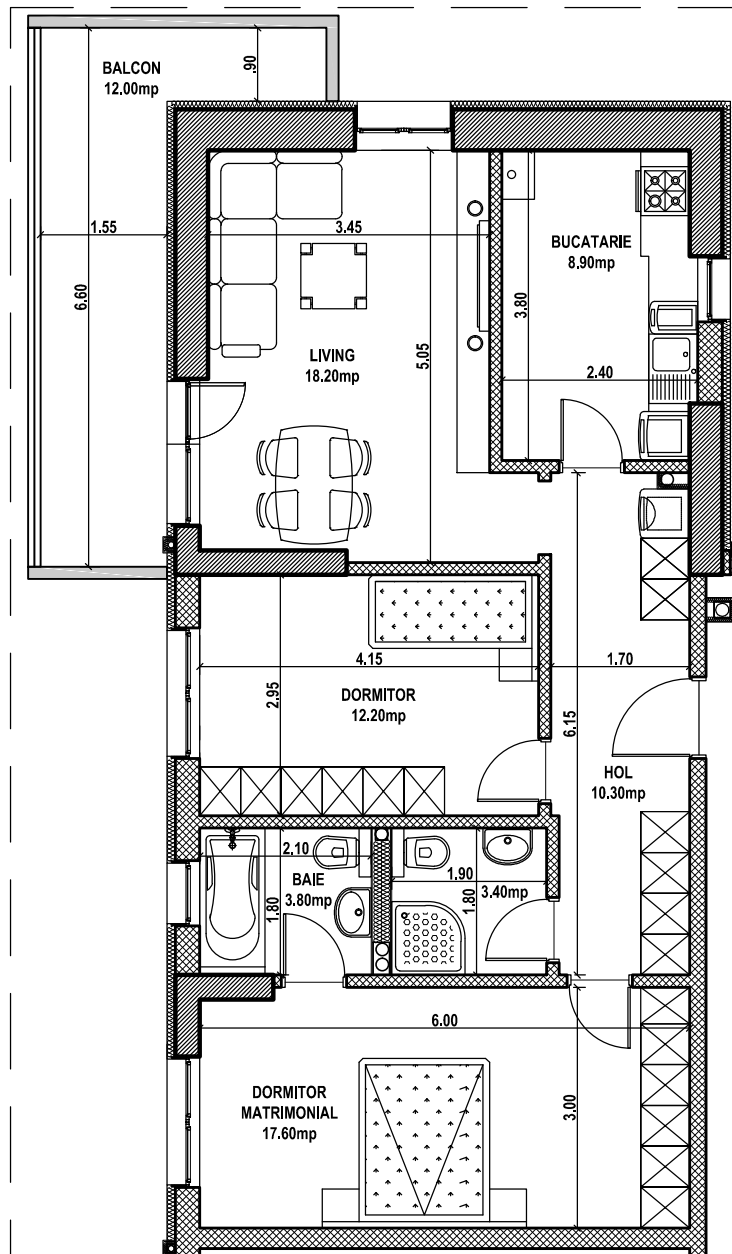
Apartament 3 camere - 1206 /1406 /1606, etaj 2 /4 /6 tronson 1, Str. George Ranetti, Nr. 2-8, Sector 6



Total suprafata construita apartament = 107.60 mp, din care:

- suprafata construita balcon = 13.90 mp

Total suprafata utila apartament = 86.40 mp



AP. 1206/
1406/1606